



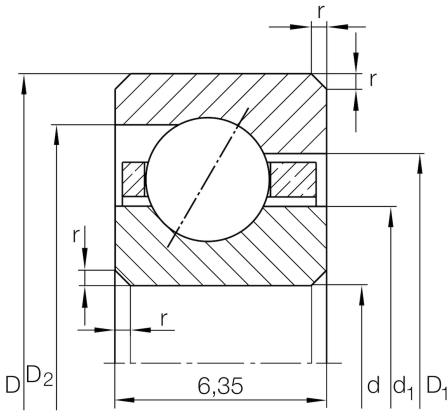
CSEA075

Angular contact ball bearing

Schaeffler Kimliği:
0611988110000

Angular contact ball bearing, Thin section
bearing CSEA, brass sheet metal cage

Teknik bilgiler



Dimensions

r_{\min}	0,6 mm	Minimum chamfer dimension
d_1	195,2 mm	Shoulder diameter inner ring
D_1	198,5 mm	Shoulder diameter on outer ring wide side face
D_2	199,7 mm	Shoulder diameter on outer ring small side face
α	30 °	Contact angle
	160 g	Ağırlık

Main Dimensions & Performance Data

d	190,5 mm	Bore diameter
d	7,5 inch	Bore diameter (Inch)
D	203,2 mm	Outside diameter
B	6,35 mm	Width
C_r	5.200 N	Basic dynamic load rating, radial
C_{0r}	11.100 N	Basic static load rating, radial
n_G	2.900 1/min	Limiting speed for oil lubrication

Temperature range

T_{\min}	-30 °C	Operating temperature min.
T_{\max}	120 °C	Operating temperature max.